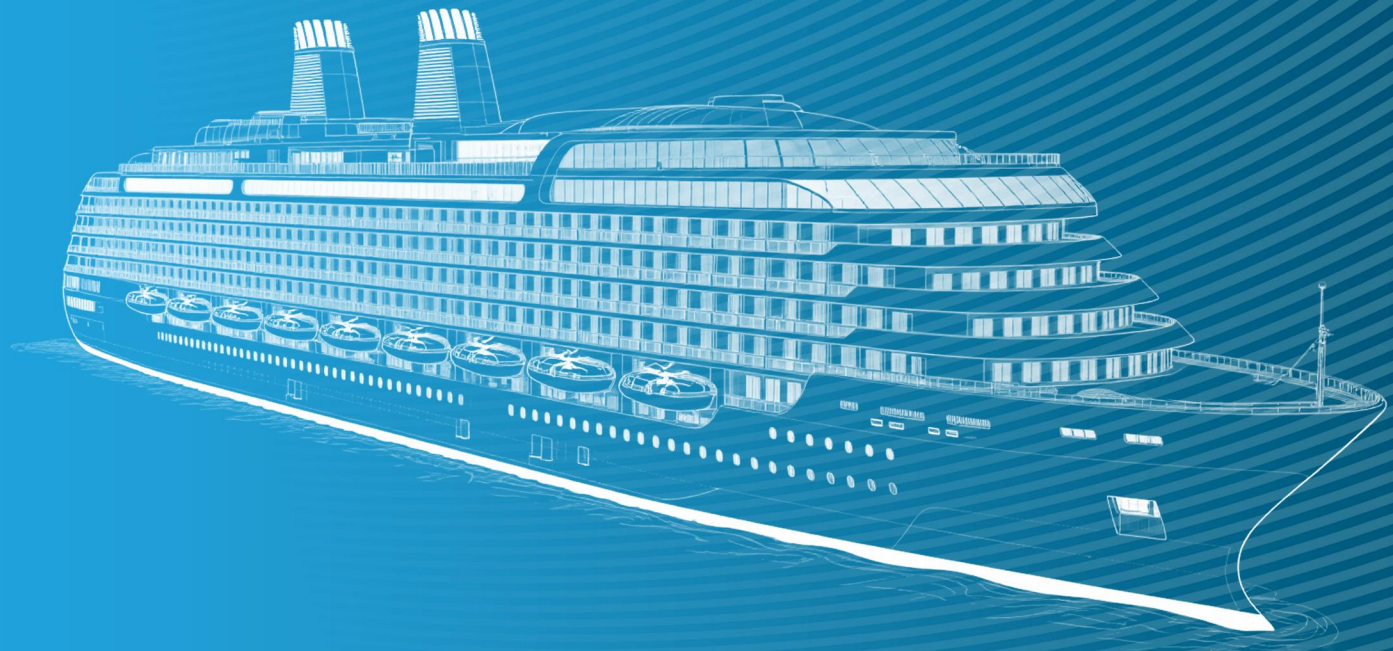


# KAM



## WET UNIT SYSTEM



# Contents

## 目录

### ● 整装式卫生单元 Modular Wet Unit



### ● 组装式卫生单元 Modular Wet Unit for Field Assembly



## 整体式卫生单元简介

整体式卫生单元是由壁板、天花板、防火门、底盘、五金配件洁具、照明、电器和水路系统组合而成的独立多功能单元，可以在有限空间实现洗浴、洗面和厕所功能。

整体式卫生单元具有以下特点：

- 整体防火性能达到 B15 级；
- 个性化整体设计，工厂产业化制做；
- 结构合理、配置灵活、环保、节能、便于清洁；
- 安装简单、缩短施工周期、减少船台占用时间；

今创船舶整体式卫生单元已经广泛用于各类船舶、海洋平台、集装箱房屋等的居住舱室，带来经济、舒适的洗浴卫生空间。

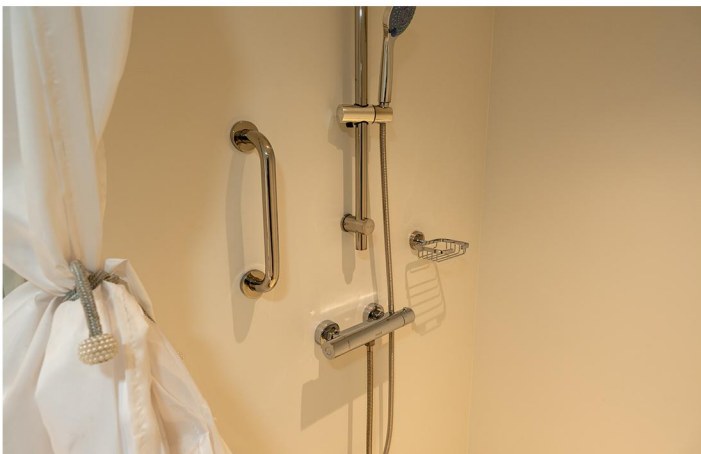
## Introduction of Wet Unit

Modular Wet Unit is an independent, multiple purpose unit, it is composed of wall, ceiling panel, fireproof equipment and pipe system, in which people could take shower/bath, wash face and toilet within limited space.

Wet Unit has the following properties:

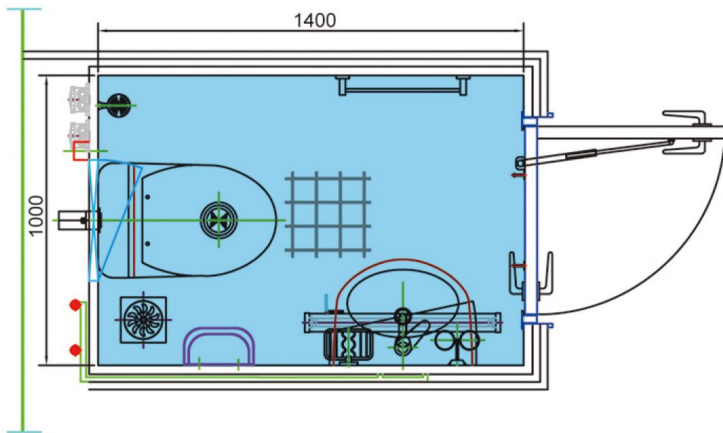
- Fire rating of the whole unit reaches B15 class;
- Personalized design and industrialized manufacture;
- Rational structure and flexible configuration, green, energy saving and easy to clean;
- Easy installation and short construction cycle;

KAM Modular Wet Unit has been widely used in accommodation cabin of all vessels, offshore platforms, container houses, and etc, making the sanitary space economical and comfortable.

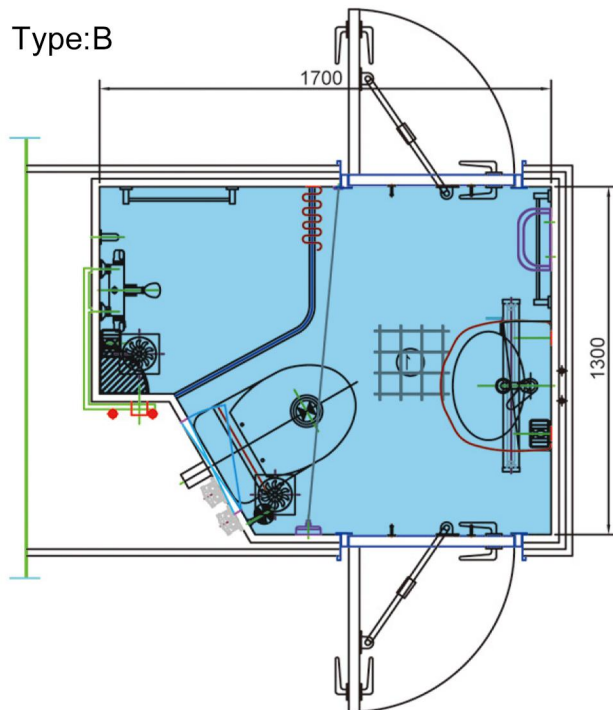


卫生单元标准图例  
Wet Unit Standard samples

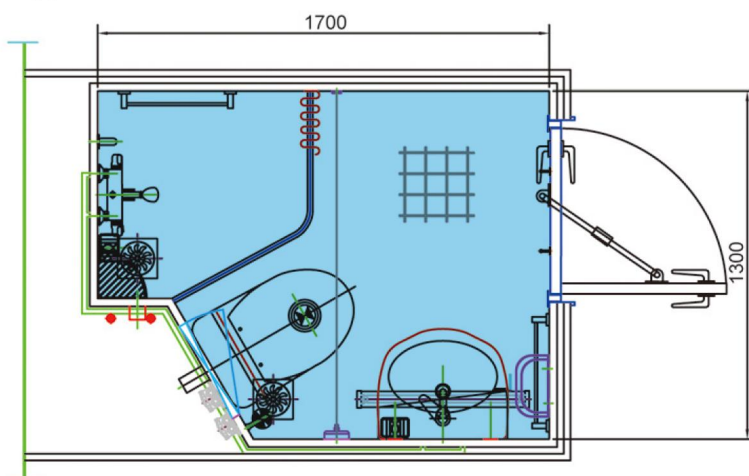
Type:A



Type:B

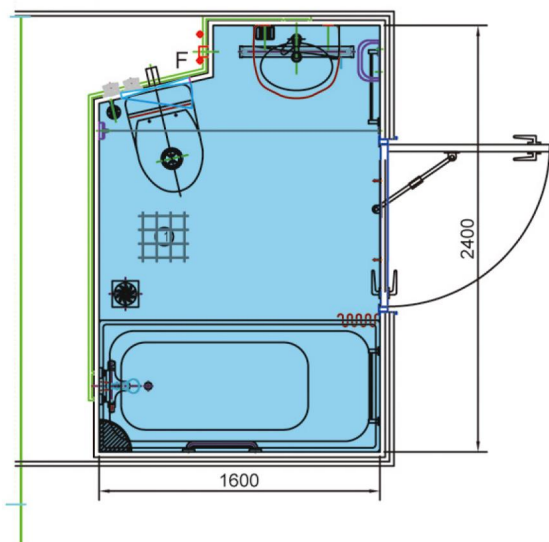


Type:C

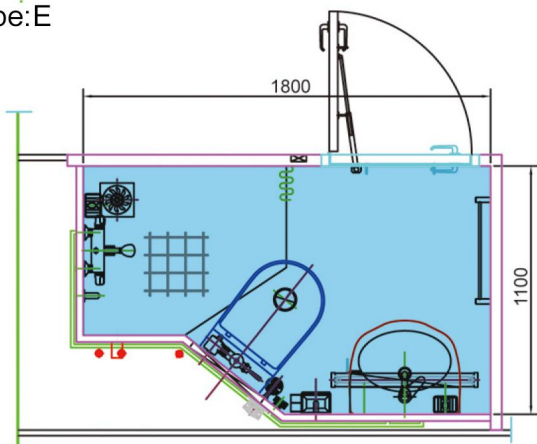


卫生单元标准图例  
Wet Unit Standard samples

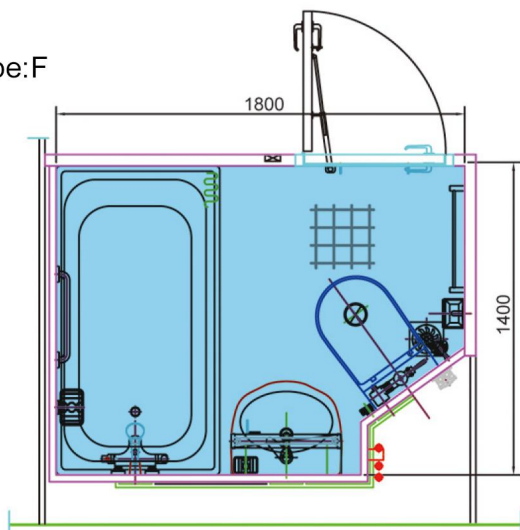
Type:D



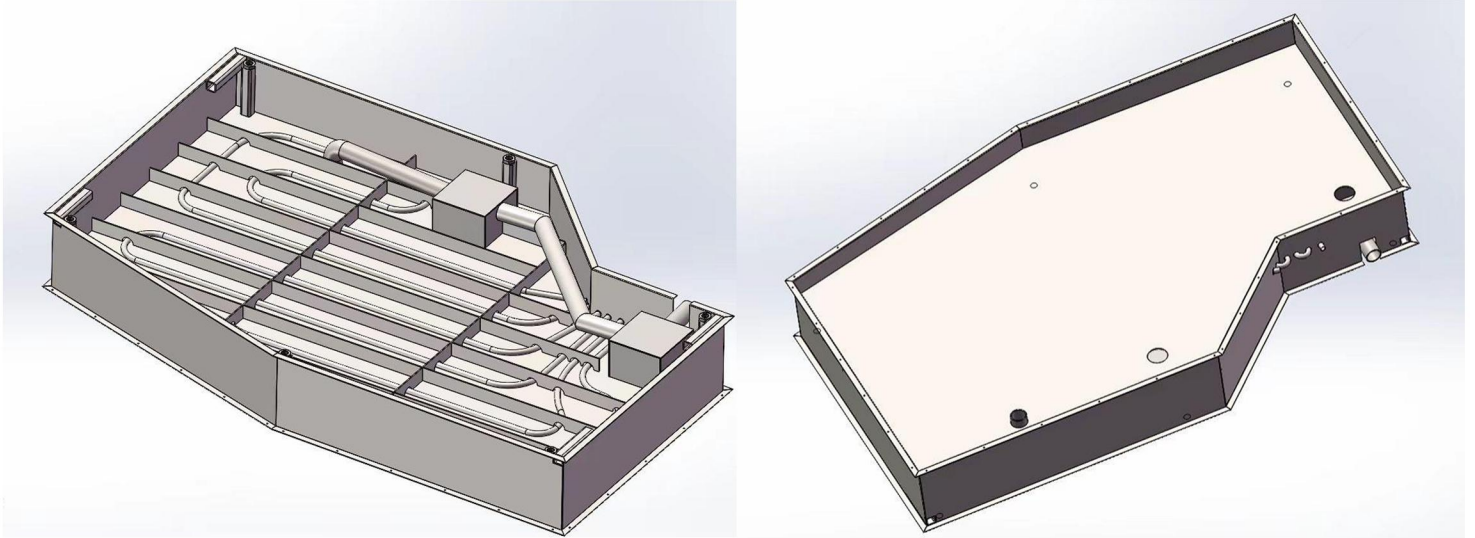
Type:E



Type:F



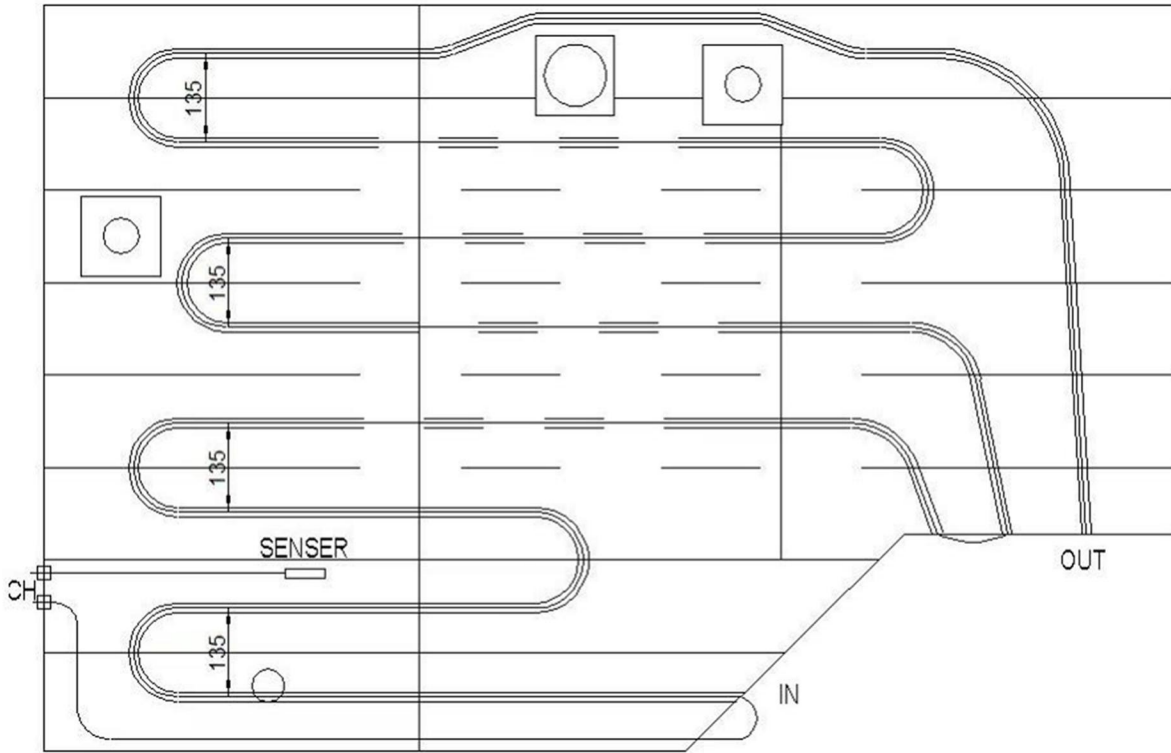
卫生单元底盘  
Bottom tray of Wet Unit



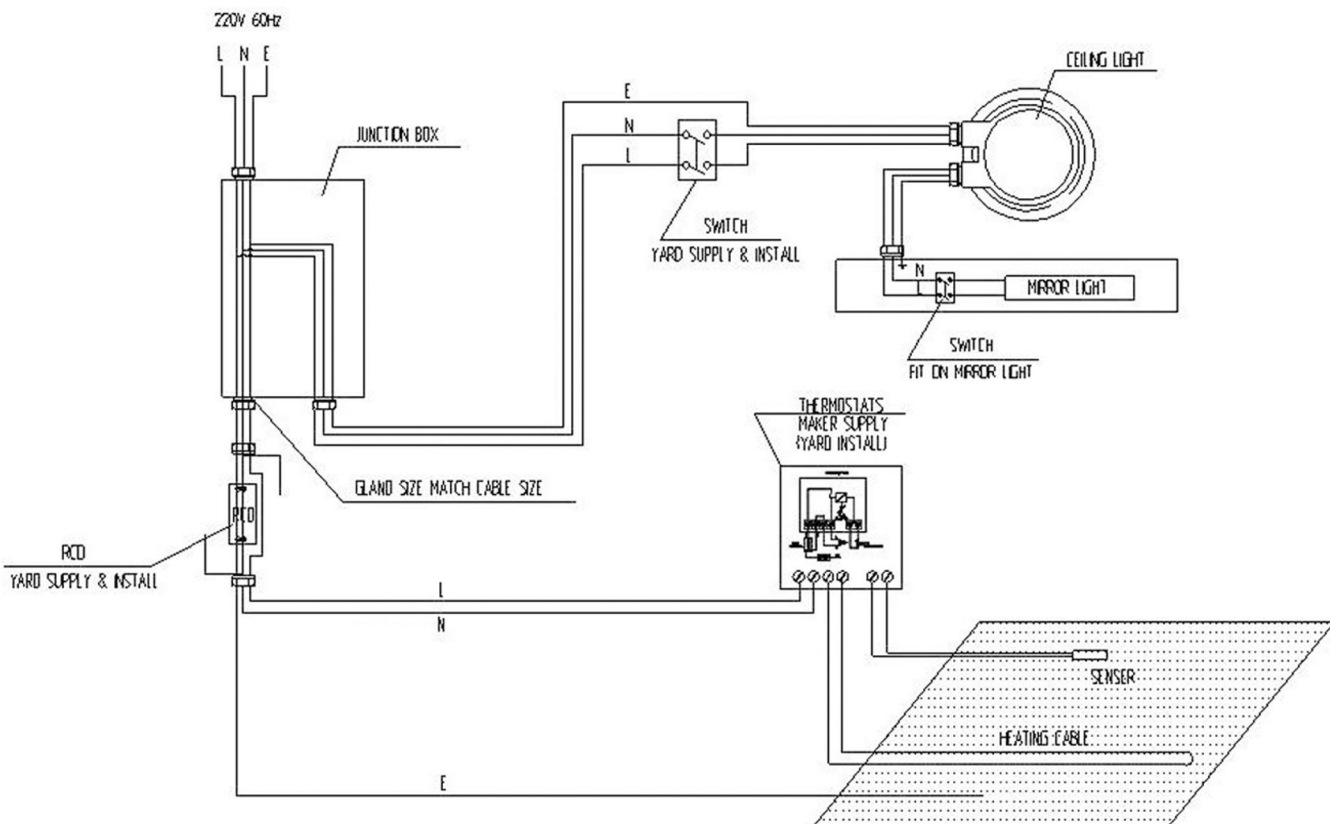
底盘材质及地面组成 Materials of Wet unit floor composed

<p>底盘材料 Bottom tray material</p>	<p>钢板、不锈钢板、铝合金或玻璃钢 Steel/Sus/aluminm alloy/GRP</p>
<p>地面材料 Floor material</p>	<p>瓷砖 Ceramic</p>
	<p>敷料 + 瓷砖 Covering + Ceramic</p>
	<p>地加热系统 + 敷料 + 瓷砖 Floor heating system + Covering + Ceramic</p>
	<p>环氧地面 Epoxy Floor</p>
	<p>敷料 + 环氧地面 Covering + Epoxy Floor</p>
	<p>地加热系统 + 敷料 + 环氧地面 Floor heating system+ Covering +Epoxy Floor</p>
	<p>彩塑地面 Epoxy iesin sand floor</p>

地暖排线图  
Floor heating diagram

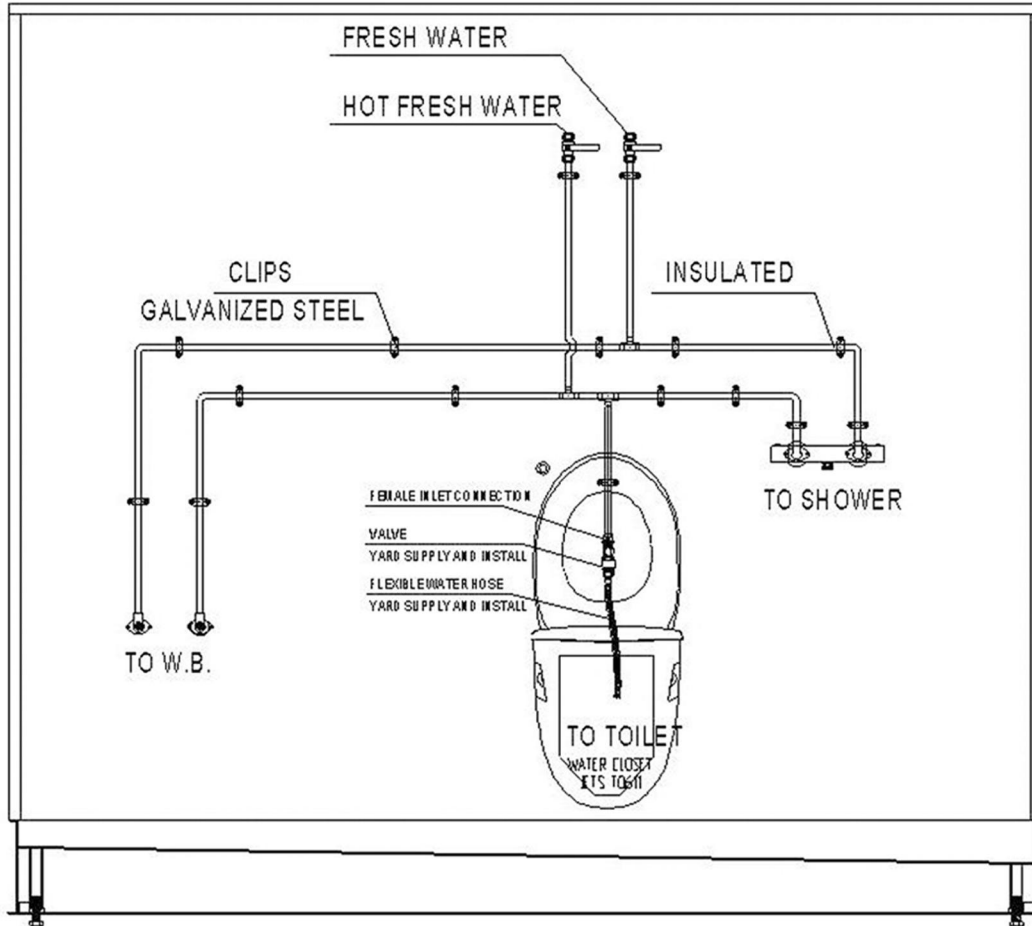


电气原理图  
Diagram of electrics in Wet Unit



管道原理图

Diagram of pipeline in Wet Unit

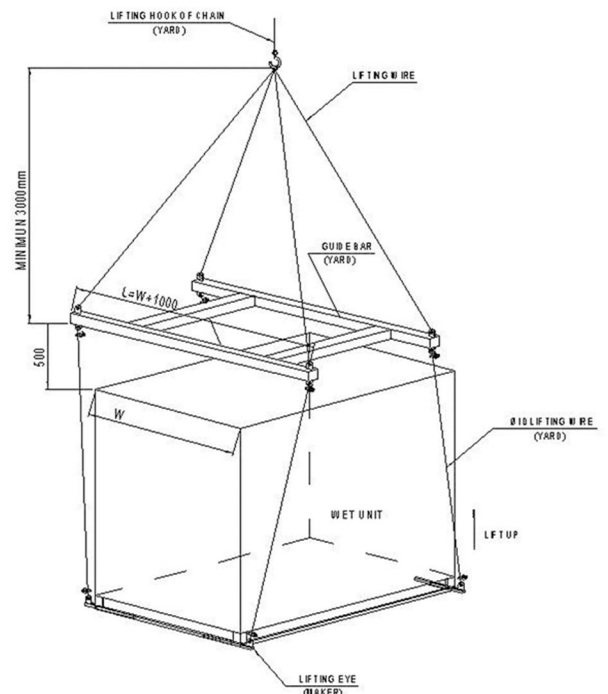


卫生单元吊装

整体式卫生单元进行吊装时应将产品吊装至正确位置，吊装过程保持平衡；  
 整体式卫生单元吊装就位后应及时将保护材料取下，以防止因焊接等作业引起燃烧；

Lifting of Wet Unit

When lifting, the unit shall be lifted to the certain correct position. The unit shall be kept balance during lifting;  
 The protecting materials shall be removed in time when the wet unit at the correct position, in case of flames caused by welding.



## 组装式卫生单元简介

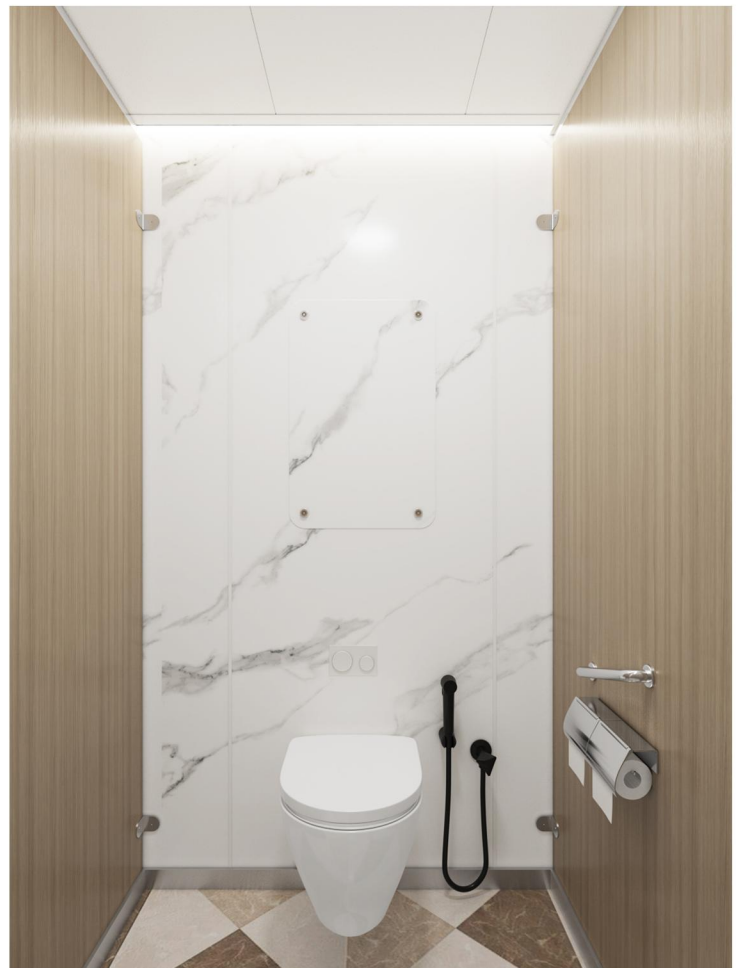
- 以分散的标准化部件或子模块形式交付；
- 运输灵活，对道路和吊装条件要求低，尤其适合改造项目或狭窄通道；
- 现场拼装、连接和密封；
- 单个面板或部件可单独拆卸更换，维护升级更灵活；

今创船舶组装式卫生单元已经广泛用于各类船舶、海洋平台、集装箱房屋等的居住舱室，带来经济、舒适的洗浴卫生空间。

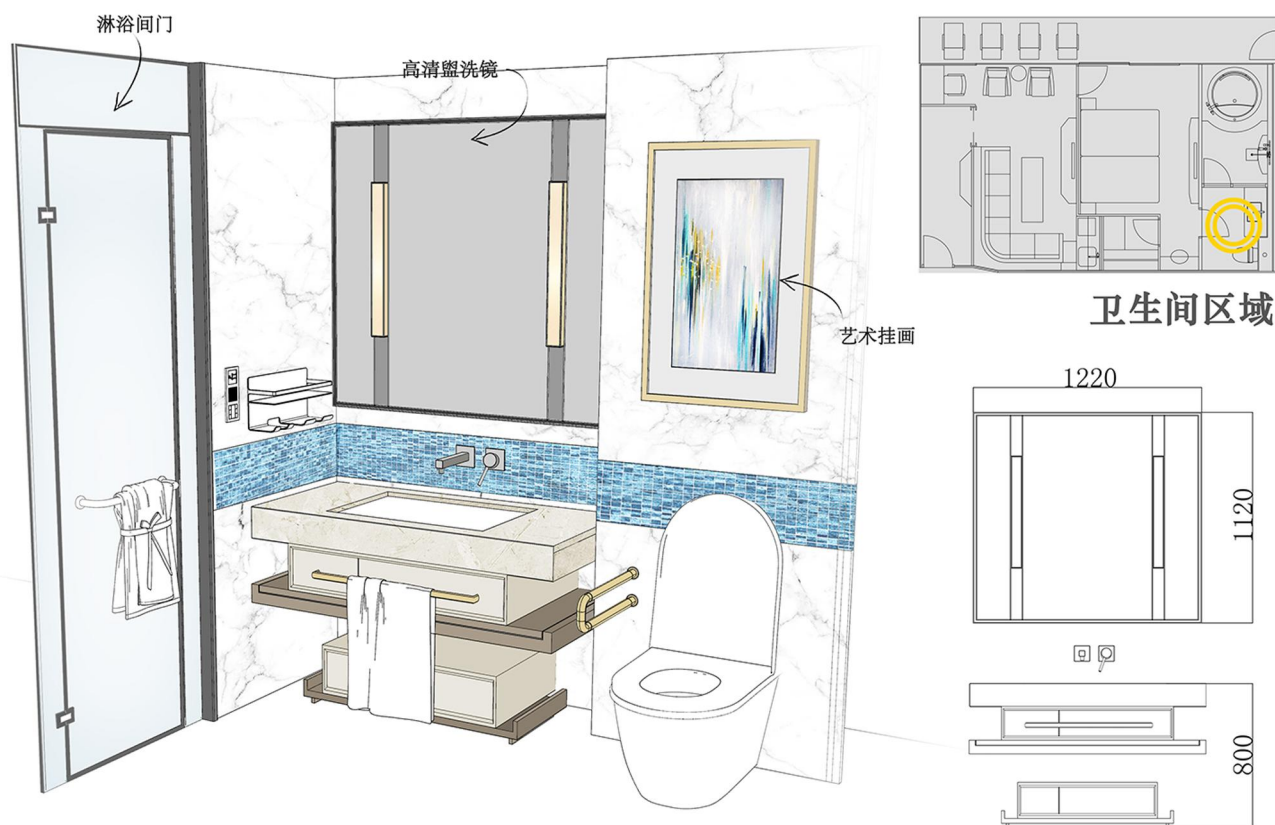
## Introduction of Modular Wet Unit for Field Assembly

- Supplied as discrete standardized components or sub-modules.
- Offers flexible transportation with low requirements for road and hoisting conditions, making it particularly suitable for renovation projects or sites with narrow access.
- Requires on-site assembly, connection, and sealing.
- Individual panels or components can be disassembled and replaced separately, allowing for more flexible maintenance and upgrades.

KAM Modular Wet Unit for Field Assembly has been widely used in accommodation cabin of all vessels, offshore platforms, container houses, and etc, making the sanitary space economical and comfortable.



组装式卫生单元案例  
Application case:



## 卫浴 Sanitary appliance in Wet Unit



壁挂坐便器  
Water Closet



面盆  
Wash Basin



镜柜  
Mirror Cabinet



淋浴恒温器  
Thermostatic Mixer



面盆龙头  
Faucet



镜前灯  
Mirror Light



下水器  
Drainer



S 弯落水管  
S Bend Downspouts



地漏  
Scupper



花洒  
Shower Head



软管  
Hose



升降杆  
Adjustable Rail

## 五金 Hardware in Wet Unit



单杠毛巾杆  
Towel Rail



双杠毛巾杆  
Towel Rail



防浪扶手  
Grab Rail



双杯架  
Double Cup Holder



肥皂盘  
Soap Dish



角篮  
Soap Basket(Corner Type)



衣帽钩  
Coat And Hat Hook



晾衣绳  
Clothesline



手纸盒  
Toilet Paper Box



纸巾架  
Paper Holder



马桶刷  
Toilet Brush And Holder



废纸篓  
Waste Paper Basket

**CUSTOM-MADE IS AVAILABLE**

